



MoLG



OVERVIEW OF THE PARISH DEVELOPMENT MODEL (PDM) & NEXT STEPS

*Presentation by PDM Secretariat (MoLG) at Eastern Regional SDG
forum, Mbale city.*

8th JUNE, 2022



2. PDM OVERVIEW AND CONTEXT- 1



- Cabinet in March 2021 approved the Parish Development Model (PDM) as the main vehicle for reducing poverty, unemployment and wealth creation, beginning with FY 2021/22.
- The PDM is also an implementation strategy for the National Development Plan III- *whose overarching development goal is to increase average household incomes improve quality of life of Ugandans*. PDM also advances the NRM Manifesto 2021-2026 commitments; while building into the historical protracted journey/ agenda for socio-economic transformation & success.



2. PDM OVERVIEW AND CONTEXT- 2



- The Parish Development Model (PDM) is a multi-sectoral strategy to create social-economic transformation by moving the 39% households from subsistence economy into the money economy, using the Parish/ Ward as the epi-centre for Development.
- PDM emphasizes the “Whole of Government” approach; while also bringing State and Non-State Actors together to ensuring increased production, processing and marketing, infrastructure and service delivery at the communities level; Focused on-farm and off-farm.
- **Again,** all this outlook is rooted in *H.E. Strategic Guidelines & Directives to Cabinet*- on 23rd June 2016 & 28th June 2021- which include PDM and others; **also linking the macro & the micro lessons.**



2. PDM OVERVIEW AND CONTEXT- 3



- What is incumbent upon us, therefore, is to focus on **“Mission Critical”**

- (a) Clarity on Vision of the Principle – H.E YKM in case of PDM and the country at large- ideally that getting out of subsistence livelihood situations will be “compulsory”, but through nurturing and building on the historical Mission of the NRA/ NRM- people centred development.

- (b) Understanding the precise and concise Tasks at hand.

- (c) Understanding each one’s role in delivering/ or to accomplish the Mission.



PDM & OTHER GOV'T INTERVENTIONS



- ❑ Through various Government interventions, regional programs, several wealth creation funds, Government has been able to reduce the number of households in subsistence production from 68% years ago to now **39% (i.e. 3.5 million households)**.

But;

- 1) The difference between the PDM and other Programs (previous or current- *NUSAF, ALREP, NAADS, Entandikwa, KALIP, MATIP, Emyooga*, etc) is that the PDM is not a program, but rather a strategy anchored on the multi-sectoral, all-inclusive approach, in order to provide holistic improvement in livelihoods and incomes of the households across the Country.
- 2) So PDM focuses on the Parish, where there's the last administrative structure of Government and civil servant (Parish Chief) for planning and coordinating.



MINIMUM SERVICES - ALL SUPPORTING PDM GOAL AT THE PARISH



1. Security: intelligence and defense infrastructure
2. Law and Order: police, magistrates
3. Education: kindergarten, primary, technical and secondary schools
4. Extension services: by crop, livestock, fisheries
5. Health Care: public and private clinics
6. Roads: District, Urban and Community Roads (DUCAR)
7. Food Storage: fresh goods and dry goods
8. Food processing: cleaning, sorting, drying, packaging and milling.
9. Power: hydro, solar and fossil fuels
10. Information and Communication Technology (ICT); data collection
11. Water: for domestic use and production
12. Financial Services: savings, credit, insurance, payment platforms etc.



THE PDM



❑ PDM is organized under 7 Pillars that are interrelated, as follows;

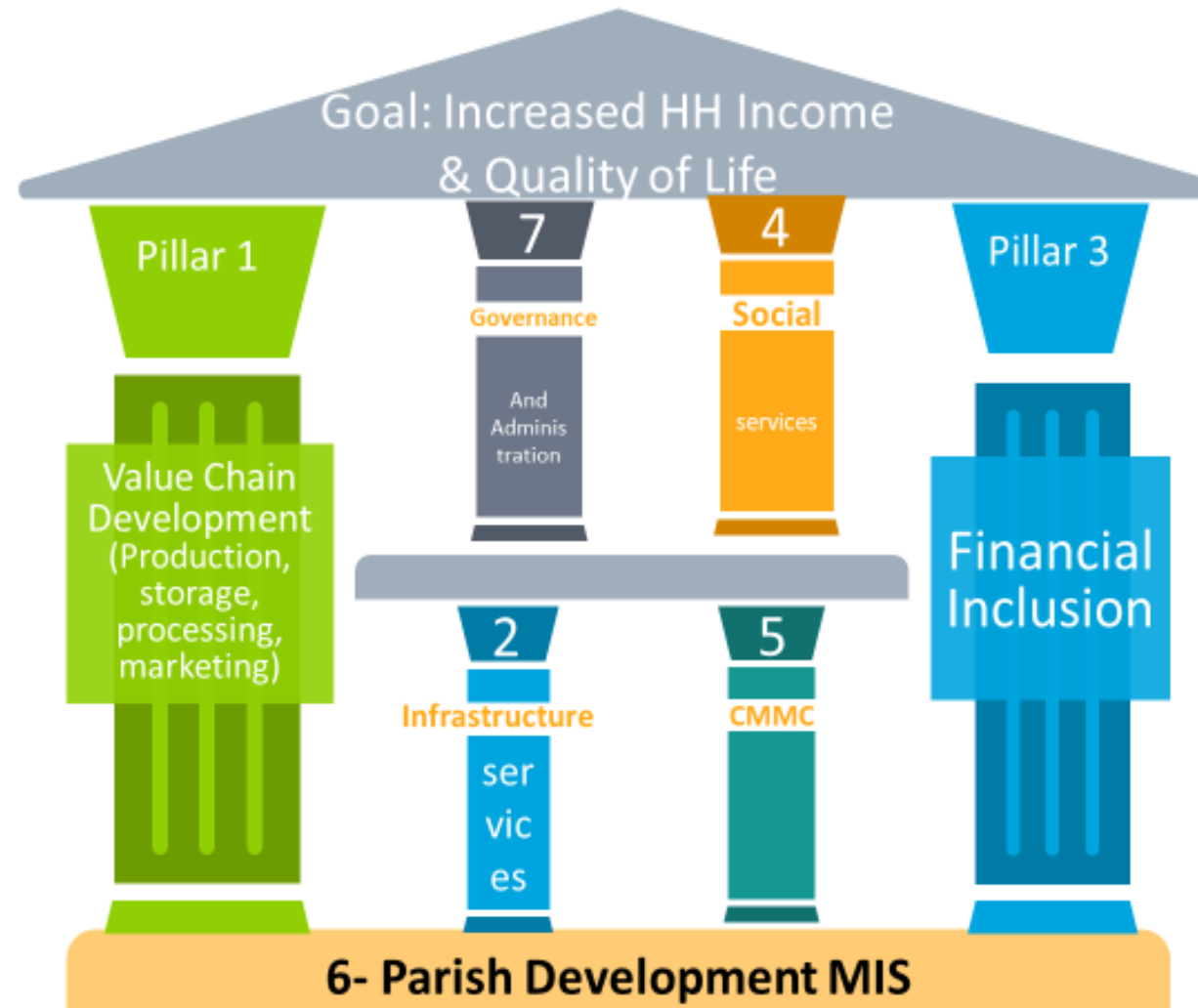
1. Agricultural value-chain development (Production, Processing and Marketing);
2. Infrastructure and Economic Services;
3. Financial Inclusion;
4. Social Services;
5. Community mobilization and Mindset change;
6. Parish-Based Management Information System (PBMIS);
7. Governance and Administration.



GRAPHICAL SUMMARY- ALL PDM PILLARS MUTUALLY REINFORCE ONE ANOTHER



The 7 Pillars of the PDM





PILLAR1: Agricultural Value Chain Dev't (Production, Processing and Marketing)



- ❖ *The key outcome is to organize households into structures for empowering them to participate in production, processing and marketing.*
- ❖ **Under the Pillar the actions include the following;**
 - Organizing and coordinating farmers at Parish/Ward level in line with Value Chain of the enterprises selected for each Parish and form Parish-Based Commodity Clusters; also Linking the organized Farmer Groups/Associations for Production, then linked to the Zonal Industrial Hubs; Industrial Parks; and other Markets- working with Off-takers;
 - ***Sustainable Environmental Practices;*** Support and mobilize Farmers/Associations to invest at community: For commodity storage, primary processing & other post-harvest handling functions; Prioritize about two Agricultural Enterprises per Subcounty, inputs regulation, etc.



PILLAR1: Agricultural Value Chain Dev't (Production, Processing and Marketing):

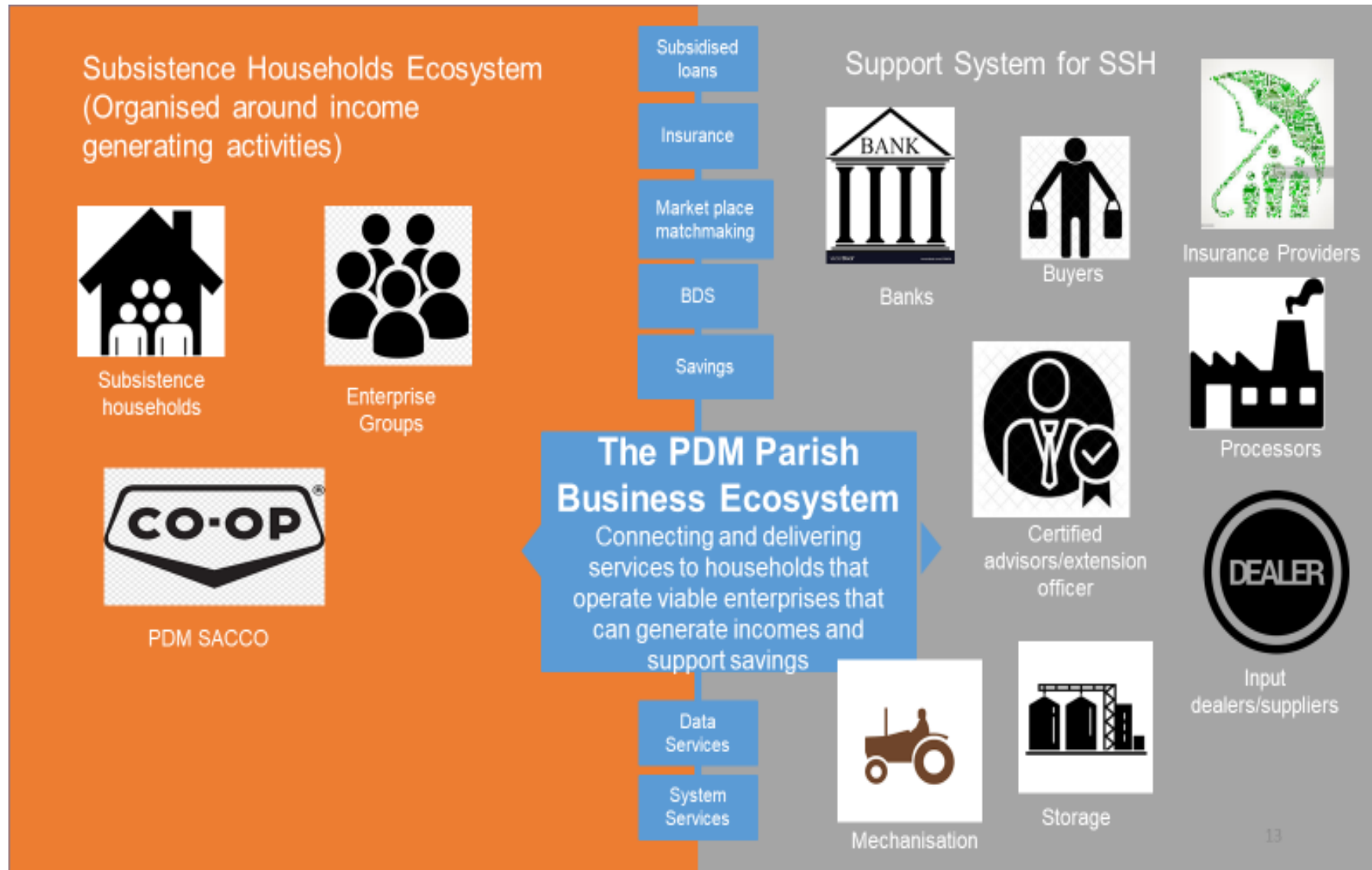


- Strengthen Farmers' Associations at local levels and build their capacities to manage Agri-business Enterprises effectively;
- Support the Farmers' Associations to develop clear and effective business plans; and joining Farmers' Associations to grow into Parish/Sub-County Dev't Associations and Cooperatives;
- Prioritize at least two Agricultural Enterprises per Subcounty that should be promoted and branded;
- Provide regulation of inputs: seed, fertilizers, acaricides, drugs, pesticides, machinery; Farm and Off-Farm power and mechanization.

- In regard to pillar one it therefore aims at eradicating poverty, increased agricultural production and end to hunger hence addressing SDG 1 and SDG 2.
- So PDM comes in handy to address concerns of poverty, hanger and ending all forms of malnutrition



PILLAR1: Graphical Summary





PILLAR 2: INFRASTRUCTURE AND ECONOMIC SERVICES



- ❖ *The pillar focuses on supportive infrastructure needs of community to improve livelihoods, such as community access roads, water for production, internet access and connectivity among others.*
- ❖ The community working through the PDCs shall identify, profile and prioritize the critical infrastructure needs for their communities that MDAs should provide, including;
 - Construction and maintenance of accessible Community roads;
 - Upgrading community local markets; Extension of safe water for domestic use and production.

-
- The infrastructure pillar will help access to affordable reliable, sustainable modern energy for all.
 - Pillar two will also help in fostering and building resilient infrastructure, promoting inclusive industrialization and innovations which is SDG9



PILLAR 3: *FINANCIAL INCLUSION*



- ❖ *The Pillar focuses on reducing financial exclusion by addressing barriers to access to financial services by the households; and Deepening and broadening formal savings, investment and insurance usage.*
- ❖ **The activities include the following major** six components;
 - I. Community Organisation into Enterprise Groups and Parish PDM SACCOs; Enterprise Groups in the Parish shall come together to form one parish-wide entity called the PDM SACCO. There shall be one PDM SACCO per Parish.
 - II. Business Development Services (BDS) and financial literacy;
 - III. PDM Integrated Financial Management Information and Payment System (PDM IFMS);



PILLAR 3: *FINANCIAL INCLUSION*



- iv. Savings and Credit;
 - V. Agricultural insurance;
 - vi. Market linkages through e-market place matchmaking and off-taker market placement.
-
- **THE PARISH REVOLVING FUND (PRF)**- shall follow a grassroots approach in which subsistence households at the Parish level shall be mobilised into Enterprise Groups and supported by PRF to develop and implement viable Community-led income-generating activities for eventual self-reliance.
 - Households who are members of an Enterprise Group shall be supported to open savings in the PDM SACCO; also supported under the PRF.

- The financial pillar will help address SDG 1 which aims at ending poverty in all its forms.
- The pillar will also help in building capacities of local populations through financial services like advancing of start up loans to farmers so as to boost productivity and having financial literacy to these groups.



PILLAR 4: **SOCIAL SERVICES**



The Pillar looks to identifying the level of service delivery and gaps; and inform the District through the Sub- County.

- The pillar activates will be those that look at social services and associated delivery mechanism in the community.
- The pillar will be guided by the outcomes the community want to receive. With this hindsight, interventions to address issues like school enrolment, school drop outs, access to safe water, better sanitation and hygiene will be carried out.

- Pillar 4 in PDM will help in addressing issues of providing quality education through increased enrollment of learners in both UPE and USE hence SDG4 of ensuring inclusive and quality education for all.
- Pillar 4 will help address concerns of poor health care in the country by easily identifying gaps of health centers and hospitals at parish and subcounty level.



PILLAR 5: COMMUNITY MOBILISATION AND MINDSET CHANGE



The Pillar looks at putting the people at center stage in decision-making on issues that affect their lives and participate in determining their pathways out of poverty.

- i) The Pillar is a prerequisite for stakeholders to take practical steps that transform the way of working. to achieve r the Sustainable Development Goals (SDGs), NDP III and the NRM Manifesto 2021-2026.
- ii) This Pillar focuses on adoption of the right way of thinking and opinions of Public Officials at all levels including Private Sector Players and Communities.



PILLAR 6: PARISH-BASED MANAGEMENT INFORMATION SYSTEM (PBMIS)



The PBMIS is an integrated system that looks at supporting community profiling, data collection, analysis, tabulation, storage and dissemination at all levels.

Pillar activities will be those that are related to;

- ☐ Providing a we-based repository for operational, administrative and socio-economic data to guide planning, budgeting, M&E, measuring performance; at Parish level and other levels of LGs at National Level.



PILLAR 7: GOVERNANCE AND ADMINISTRATION



The Pillar looks at implementation aspects of the PDM, by providing for coordination and implementing structures as well as functions at both the National and Sub-National levels.

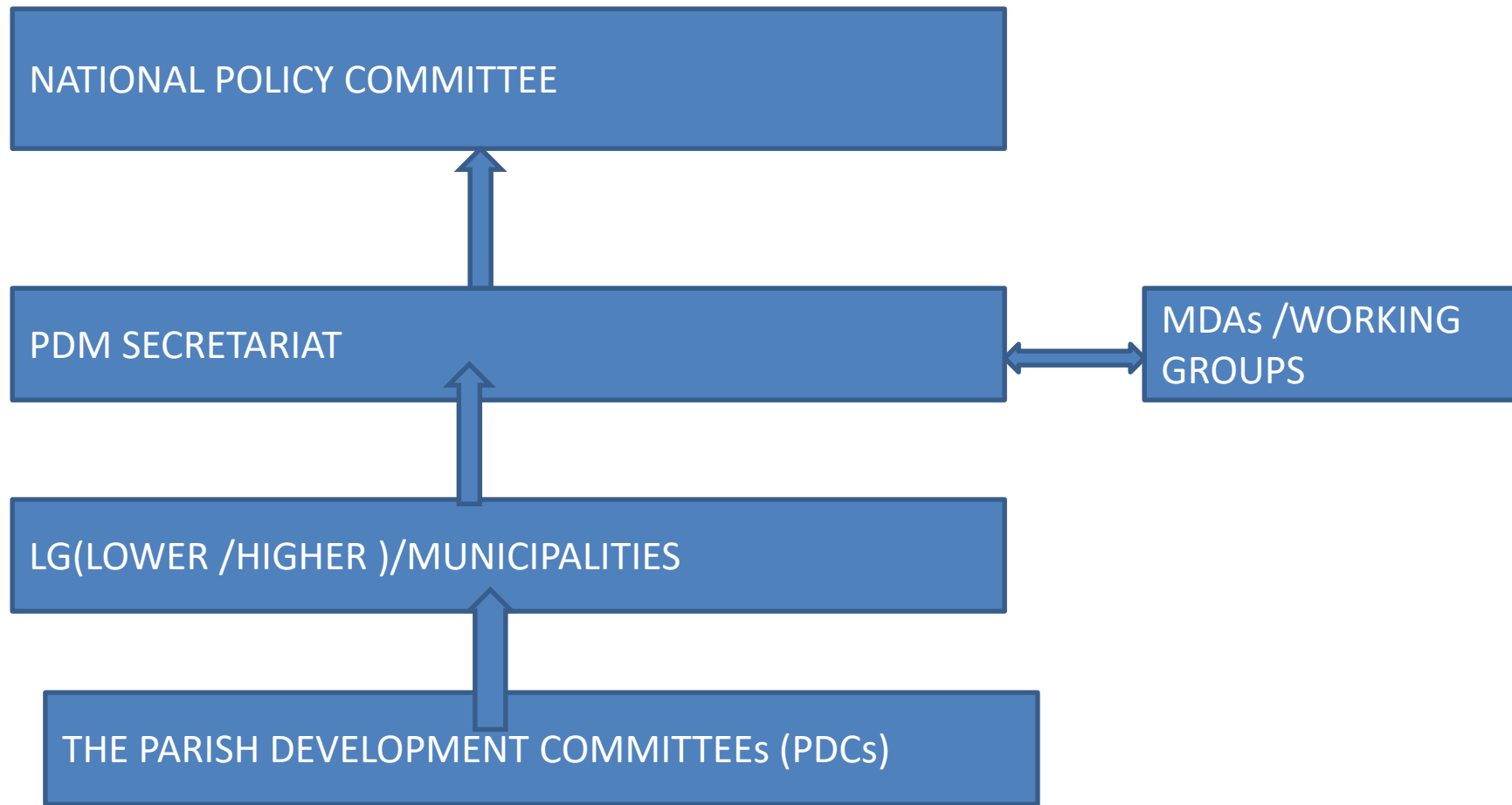
- ❑ **National Policy Committee (NPC);** Chaired by H.E the President and comprised of Ministers, the NPC is the apex- overall policy direction, oversee and guide the operationalization of PDM and consistency with NDP III and NRM Manifesto.



PILLAR 7: GOVERNANCE AND ADMINISTRATION



- THE PDM NATIONAL STRUCTURE





PILLAR 7: GOVERNANCE AND ADMINISTRATION



At every Parish/ Ward is the Parish Development Committee (PDC), comprised of the following;

S/N	Members	Total	Remarks/Position
1	LCII Chairperson	1	Chairperson
2	Parish Chief of the Parish	1	Secretary
3	Chairperson for Women Council at the Parish	1	Member
4	Chairperson for Youth Council at the Parish	1	Member
5	Chairperson for Persons with Disability Affairs at the Parish	1	Members
6	Chairperson of the Ruling Party at the Parish	1	Member
7	Opinion Leader	1	Member

EMERGING ISSUES

- ☐ In case of PRF, how can all Parishes receive the Ugx 17m and then the Ugx 100m, these parishes are not homogenous?
- ☐ Won't the PDM funds and interventions fail, just like some other Govt programs have?
- ☐ Are *Emyooga*, *Entandikwa*, etc predecessors of PDM?
- ☐ Is PDM about the Secretariat?
- ☐ Is PDM same as OWC?
- ☐ Will programs like UWEP, YLP be abolished because of PDM?
- ☐ Where are the markets from PDM mass production?
- ☐ How do we communicate a common message? Etc.

NEXT STEPS- MAJOR HIGHLIGHTS

Immediate

- 1) Full Roll-out, informed by challenges & lessons from Bukedi North,
- 2) National Roll-out & direct community involvement;
- 3) Intensive media outreach across the country;
- 4) Reaching out to stakeholders;
- 5) Training for PDCs and Parish Chiefs and across 10,954 Parishes;
- 6) Working out and roll-out of an M&E framework that captures NDP III performance indicators.
- 7) Keep supporting the NRM & H.E. the President.

END