



# MoLG



## **THE PARISH DEVELOPMENT MODEL AND SDGs: OPPORTUNITIES FOR LOCAL AUTHORITIES IN UGANDA.**

***Presentation by PDM Secretariat (MoLG) at sustainable  
conference - GULU.***

***13<sup>th</sup> JUNE, 2022***



## 2. PDM OVERVIEW AND CONTEXT- 1



- Cabinet in March 2021 approved the Parish Development Model (PDM) as the main vehicle for poverty reduction (through **i)** Household food security; **ii)** Employment; **iii)** Wealth creation; and **iv)** Service delivery- beginning with FY 2021/22.
- The PDM is also an implementation strategy for the National Development Plan III- *whose overarching development goal is to increase average household incomes improve quality of life of Ugandans.*
- PDM also advances the NRM Manifesto 2021-2026 commitments; while building into the historical protracted mission/ agenda for successful socio-economic transformation for Uganda and the African people.



## 2. PDM OVERVIEW AND CONTEXT- 2



- The Parish Development Model (PDM) is a multi-sectoral strategy to create social-economic transformation by moving the 39% households from subsistence economy into the money economy, using the Parish/ Ward as the epi-centre for Development.
- PDM emphasizes the “Whole of Government” approach; while also bringing State and Non-State Actors together to ensuring increased production, processing and marketing, infrastructure and service delivery at the communities level; Focused on-farm and off-farm.
- **Again**, all this outlook is rooted in *H.E. Strategic Guidelines & Directives to Cabinet*- on 23<sup>rd</sup> June 2016 & 28<sup>th</sup> June 2021- which include PDM and others; **also linking the macro & the micro lessons; plus the Sustainable Development Goals (SDGs).**



## ***2. PDM OVERVIEW AND CONTEXT- 3***



- What is incumbent upon us, therefore, is to focus on **“Mission Critical”**
  
- (a) Clarity on Vision of the Principle – H.E YKM in case of PDM and the country at large- ideally that getting out of subsistence livelihood situations will be “compulsory”, but through nurturing and building on the historical Mission of the NRA/ NRM- people centred development.
  
- (b) Understanding the precise and concise Tasks at hand.
  
- (c) Understanding each one’s role in delivering/ or to accomplish the Mission.



# ***PDM & OTHER GOV'T INTERVENTIONS***



- ❑ Through various Government interventions, regional programs, several wealth creation funds, Government has been able to reduce the number of households in subsistence production from 68% years ago to now **39% (i.e. 3.5 million households)**.
- ❑ So PDM focuses on the Parish, where there's the 1<sup>st</sup> administrative structure of Government and civil servant (Parish Chief) for planning and coordinating in decentralized framework.
- ❑ The above has already provided a historical/ unprecedented opportunity for Local Authorities to fill all positions of Parish Chiefs/ Ward Agents throughout the country. ***This renewed staffing infrastructure of administrators accessible to communities in Uganda is pivotal to advancing the elements that build into SDGs targets/ indicators.***



## **MINIMUM SERVICES - ALL SUPPORTING PDM GOAL AT PARISH & ADVANCE SDGs- E.g:**



1. Security: intelligence and defense infrastructure- **SDG#16-** on ***Peace, Justice and Strong Institutions;***
2. Law and Order: police, magistrates- **SDG#16** -thus making these services **more accessible to communities through Local Authorities;**
3. Education: kindergarten, primary, technical & secondary schools -**SDG#4**
4. Extension services: by crop, livestock, fisheries
5. Health Care: public and private clinics - **SDG#3**
6. Roads: District, Urban and Community Roads (DUCAR) -
7. Food processing: cleaning, sorting, drying, packaging and milling.
8. Power: hydro, solar and fossil fuels
9. Information and Communication Technology (ICT); data collection
10. Water: for domestic use and production - **SDG#12** on ***Responsible Consumption and Production,***
11. Financial Services: savings, credit, insurance, payment platforms etc.



# ***THE PDM***



❑ PDM is organized under 7 Pillars that are ***interrelated, advance SDGs*** and are ***key for Local Authorities***, as follows;

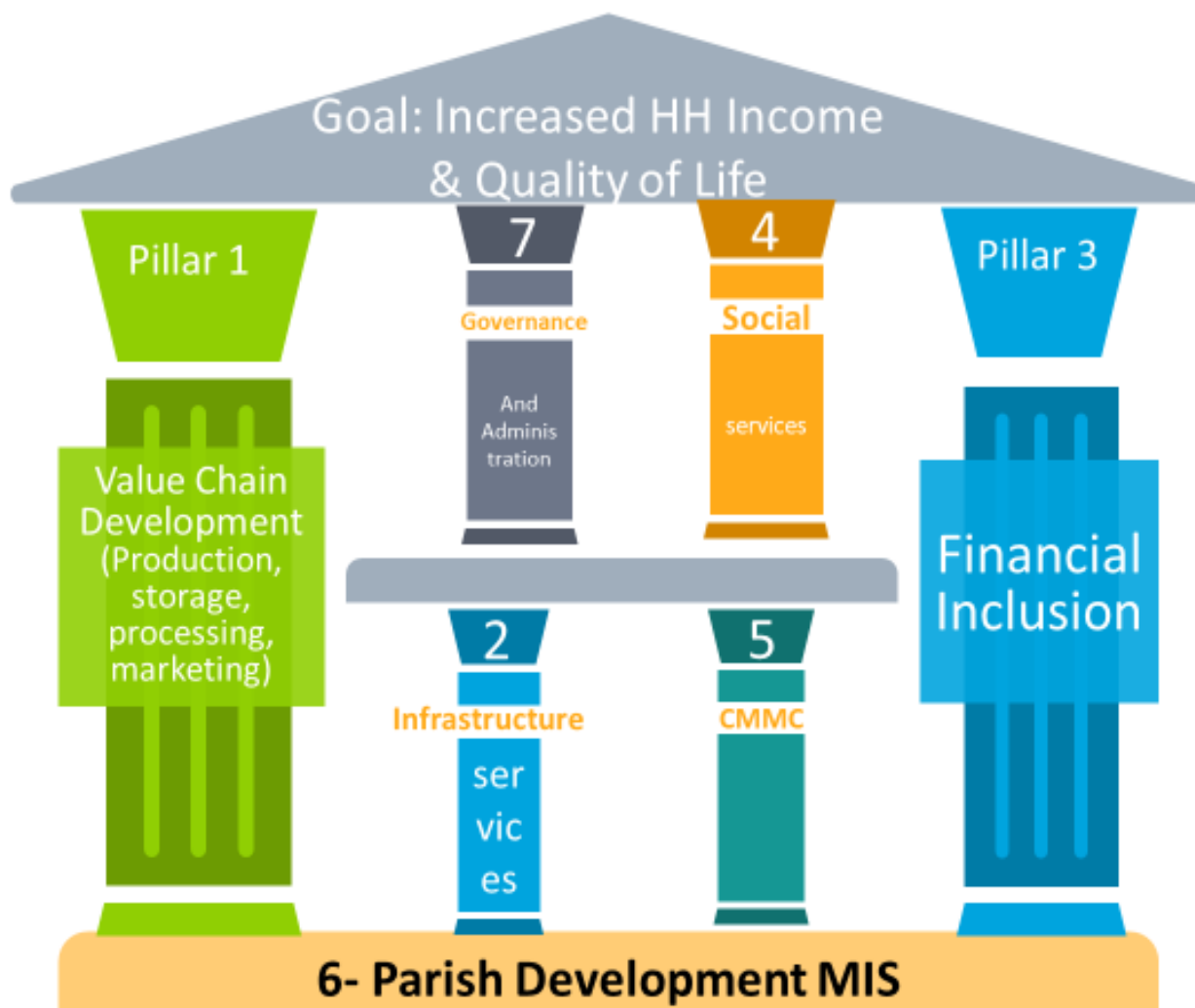
1. Agricultural value-chain development (Production, Processing and Marketing);
2. Infrastructure and Economic Services;
3. Financial Inclusion;
4. Social Services;
5. Community mobilization and Mindset change;
6. Parish-Based Management Information System (PBMIS);
7. Governance and Administration.



# GRAPHICAL SUMMARY- ALL PDM PILLARS MUTUALLY REINFORCE ONE ANOTHER



## The 7 Pillars of the PDM





## **PILLAR1: Agricultural Value Chain Dev't (Production, Processing and Marketing)**



- ❖ *The key outcome is to organize households into structures for empowering them to participate in production, processing and marketing.*
- ❖ **Under the Pillar the actions include the following;**
  - Organizing and coordinating farmers at Parish/Ward level in line with Value Chain of the enterprises selected for each Parish and form Parish-Based Commodity Clusters; also Linking the organized Farmer Groups/Associations for Production, then linked to the Zonal Industrial Hubs; Industrial Parks; and other Markets- working with Off-takers;
  - Strengthen Farmers' Associations at local levels and build their capacities to manage sustainable food production, Agri-business Enterprises effectively and scout market opportunities;



## **PILLAR 1: Agricultural Value Chain Dev't (Production, Processing and Marketing):**



- Support the Farmers' Associations to develop clear and effective business plans; and joining Farmers' Associations to grow into Parish/Sub-County Dev't Associations and Cooperatives;- **Key to Local Authorities e.g. DCOs, DPOs;**
- Promote Sustainable Environmental Practices; Prioritize at least two Agricultural Enterprises per Sub-county that should be promoted, branded and marketed;
- Provide regulation of inputs: seed, fertilizers, acaricides, drugs, pesticides;
- Farm machinery – e.g. “Walking Tractors”, Oxen & Ox ploughs, the big Tractors, Planters; Storage facilities, etc.



## **PILLAR 1: Agricultural Value Chain Dev't (Production, Processing and Marketing):**



- Through PDM, **Local Authorities can create necessary awareness**, but also **guide on On-farm and Off-Farm power machinery interventions** for PDM Enterprise Groups in urban, peri-urban and rural areas- e.g.
  - 1) *Awareness/ information- about PDM; Annual agricultural shows and trade fares: lessons on varieties, value- addition, networks;*
  - 2) *Providing land & amenities for PDM Enterprise Groups in Local Authorities' jurisdiction: to site Hullers- for grains: maize, sorghum, millet; cassava, etc;*
  - 3) *Millers/ mixers for & packaging animal feeds, human food, plant & animal based liquid fertilisers, packaging chicken droppings, cow-dung fertilisers, etc;*



## **PILLAR 1: Agricultural Value Chain Dev't (Production, Processing and Marketing):**



- 4) Silage machines, for farm or commercial use;*
- 5) Commercial blenders/ pulpers for fruits & vegetables;*
- 6) Roasters for coffee, ground nuts, soya bean, etc;*
- 7) Dryers & kilns; flat beds for grains, cassava, potatoes, vanilla, fish, fruits, vegetables, mushrooms, yams, etc;*
- 8) Providing Single to three phase power converter- related services;*
- 9) Identifying, certification & supervision of service providers – Trainers to deliver on commitments, Offtakes/ markets, etc.*

## PILLAR 1: ...examples in advancing SDGs:

- **(a)** SDG #1- End poverty in all its forms everywhere;
- **(b)** SDG#2- End hunger, achieve food security and improved nutrition and promote sustainable agriculture;
- **(c)** SDG #8- Sustained, inclusive and sustainable economic growth;
- **(d)** SDG#10- Reduced Inequalities;
- **(e)** SDG #12- Sustainable consumption and production patterns;
- **(f)** SDG #13 - Climate action;
- **(g)** SDG #15 - Life on land-including Reversing man-made deforestation ....;
- **(h)** SDG#17- on Global partnerships....



# PILLAR1: *Graphical Summary*



Subsistence Households Ecosystem  
(Organised around income  
generating activities)



Subsistence  
households



Enterprise  
Groups



PDM SACCO

Subsidised  
loans

Insurance

Market place  
matchmaking

BDS

Savings

## The PDM Parish Business Ecosystem

Connecting and delivering  
services to households that  
operate viable enterprises that  
can generate incomes and  
support savings

Data  
Services

System  
Services

Support System for SSH



Banks



Buyers



Insurance Providers



Processors



Certified  
advisors/extension  
officer



Input  
dealers/suppliers



Mechanisation



Storage



## PILLAR 2: INFRASTRUCTURE AND ECONOMIC SERVICES



- ❖ *The pillar focuses on supportive infrastructure needs of community to improve livelihoods, such as community access roads, water for production, internet access and connectivity among others.*
- ❖ Communities working through the PDCs shall identify, profile and prioritize the critical infrastructure needs for their localities- for MDALGs & Stakeholders to provide, including;
  - Construction and maintenance of accessible & resilient Community roads; ***Key for Manifestos of elected Leaders in Local Authorities.***
  - Upgrading community local markets; Extension of safe water for domestic use and production- ***for Leaders again.....***

## Pillar 2 and ....SDGs

---

- In addition to achieving for leaders of Local Authorities, Pillar 2 contributes to **SDG#9**- on Industry, Innovation and Infrastructure;
- Pillar roots for increased access to more affordable, reliable & sustainable modern energy for all.
- Pillar fosters resilient infrastructure, inclusive industrialization and innovations.
- Pillar promotes **SDG#17**- on partnerships.



## PILLAR 3: *FINANCIAL INCLUSION*



- ❖ *The Pillar focuses on reducing financial exclusion by addressing barriers to access to financial services by the households; and Deepening and broadening formal savings, investment and insurance usage.*
- ❖ **The activities include the following major six components;**
  - I. Community Organization into Enterprise Groups and Parish PDM SACCOs; Enterprise Groups in the Parish shall come together to form one parish-wide entity called the PDM SACCO. There shall be one PDM SACCO per Parish.
  - II. Business Development Services (BDS) and financial literacy: ***(Arguably) Local Authorities wish to have richer communities- for taxation & contribution to local dev't;***
  - III. PDM Integrated Financial Management Information and Payment System (PDM IFMS);



## PILLAR 3: *FINANCIAL INCLUSION*



- iv. Savings and Credit;
  - V. Agricultural insurance;
  - vi. Market linkages through e-market place matchmaking and off-taker market placement.
- 
- **THE PARISH REVOLVING FUND (PRF)**- shall follow a grassroots approach in which subsistence households at the Parish level shall be mobilised into Enterprise Groups and supported by PRF to develop and implement viable Community-led income-generating activities for eventual self-reliance.
  - Households who are members of an Enterprise Group shall be supported to open savings in the PDM SACCO; also supported under the PRF.



## Pillar 3 and SDGs .....

---

- Pillar 3 operationalizes Pillar 1 (and thus all the SDGs that Pillar #1 contributes to -as already highlighted).



## PILLAR 4: **SOCIAL SERVICES**



*The Pillar looks to identifying the level of service delivery and gaps; and inform the District through the Sub- County.*

- Focused on inclusive social services and associated delivery mechanisms/ systems in the community.
- Underpins interventions for full-scale gender-oriented school enrolment & retention; Access to safe water; Better sanitation and hygiene. ***Key to Local Authority leaders' Manifestos, too.***
- Pillar 4 categorical on: **SDG#3**- on Good Health... increased life-expectancy; **SDG#4**- Quality Education...with upward social mobility in ending poverty; **SDG#8** – on Decent Work & Economic Growth; **SDG#10**- Reduced Inequalities ...; **SDG#17** – Partnerships.



## PILLAR 5: **COMMUNITY MOBILISATION AND MINDSET CHANGE**



*The Pillar looks at putting the people at center stage in decision-making on issues that affect their lives and participate in determining their pathways out of poverty.*

- i) The Pillar is a prerequisite for stakeholders to take practical steps that transform the way of working. to achieve the Sustainable Development Goals (SDGs), NDP III, NRM Manifesto 2021-2026 & S/county & District Development Plans- ***for Local Authorities***.
- ii) This Pillar focuses on adoption of the right way of thinking and opinions of Public Officials at all levels including Private Sector Players and Communities.
- iii) Pillar 5 contributes to: all Pillars (**thus SDGs thereof**).



## PILLAR 6: PARISH-BASED MANAGEMENT INFORMATION SYSTEM (PBMIS)



*The PBMIS is an integrated system that looks at supporting community profiling, data collection, analysis, tabulation, storage and dissemination at all levels.*

**Pillar activities will be those that are related to;**

- ☐ Providing a we-based repository for operational, administrative and socio-economic data to guide planning, budgeting, M&E, measuring performance; at Parish level and other levels of LGs at National Level;
- ☐ Pillar **underpins all SDGs...**and *Local Authorities need this PDM data for the of Officers and Political work.*



## PILLAR 7: GOVERNANCE AND ADMINISTRATION



*The Pillar looks at implementation aspects of the PDM, by providing for coordination and implementing structures as well as functions at both the National and Sub-National levels.*

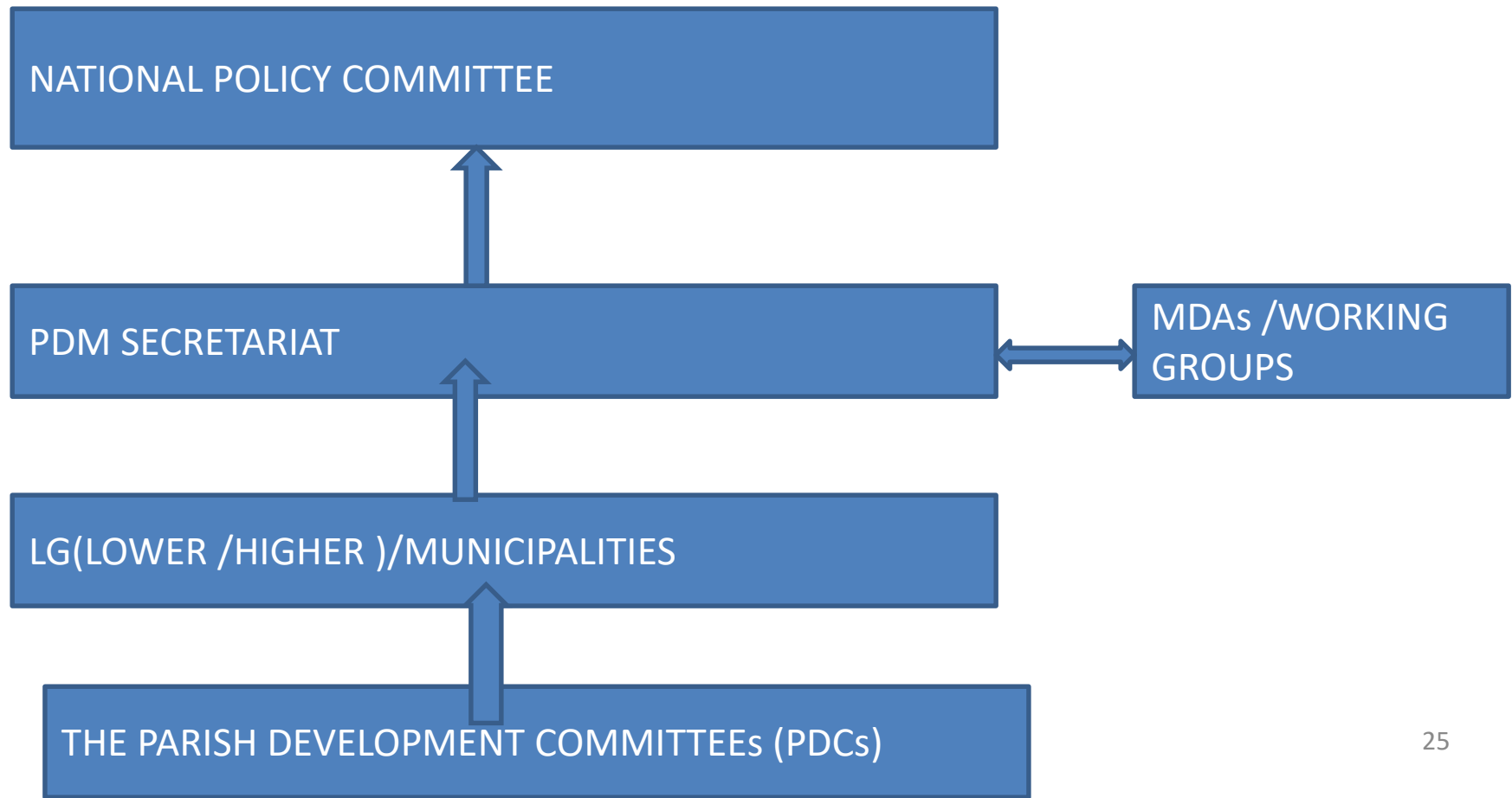
- ❑ **National Policy Committee (NPC);** Chaired by H.E the President and comprised of Ministers, the NPC is the apex- overall policy direction, oversee and guide the operationalization of PDM and consistency with NDP III and NRM Manifesto.



## PILLAR 7: GOVERNANCE AND ADMINISTRATION



- THE PDM NATIONAL STRUCTURE – underpins SDG#17 & actions at Local Authorities:





## PILLAR 7: GOVERNANCE AND ADMINISTRATION



At every Parish/ Ward is the Parish Development Committee (PDC), comprised of the following;

S/N	Members	Total	Remarks/Position
1	LCII Chairperson	1	Chairperson
2	Parish Chief of the Parish	1	Secretary
3	Chairperson for Women Council at the Parish	1	Member
4	Chairperson for Youth Council at the Parish	1	Member
5	Chairperson for Persons with Disability Affairs at the Parish	1	Members
6	Chairperson of the Ruling Party at the Parish	1	Member
7	Opinion Leader	1	Member

# ***NEXT STEPS- MAJOR HIGHLIGHTS***

## ***Immediate***

- 1) Full Roll-out, informed by challenges & lessons from Bukedi North,
- 2) National Roll-out & direct community involvement;
- 3) Intensive media outreach across the country;
- 4) Reaching out to stakeholders & generating/capturing emerging issues;
- 5) Training for PDCs and Parish Chiefs and across 10,954 Parishes;
- 6) Working out and roll-out of an M&E framework that captures NDP III performance indicators.
- 7) Keep supporting the NRM & H.E. the President, as we advance SDGs & works of Local Authorities. **END**